




CREATIVE
EDITION

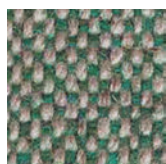
profim



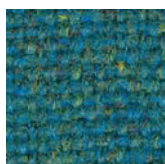
CREATIVE EDITION

Creative Edition is a programme designed according to the latest trends. We have created it, having in mind interior designers as well as all those who appreciate a good design and look for offbeat solutions. Creative Edition gives you an opportunity to design unique, custom-made spaces. It uses fabrics specially selected from renowned European suppliers such as Kvadrat, Bute or Camira. The wide range of colours in upholstery that boasts exceptional weave gives our collection a new and unique character. The option of quilting fabrics and leather will be an original solution, which will allow to achieve a very effective, 3D look of our furniture.

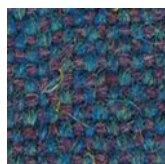
Main Line Flax		 CREATIVE EDITION
Manufacturer	Camira	
Composition	70% Virgin wool, 30% Flax	
Weight	435 g/m2	
Certificates	<ul style="list-style-type: none"> - abrasion resistance - 50000 Martindale cycles (BS EN ISO 12947-2) - pilling resistance - 4 (BS EN ISO 12945-2) - flammability - cigarette (BS EN 1021-1) - flammability - match (BS EN 1021-2) - flammability (BS 5852, Crib 5) - flammability (UNI 9175 Classe 1 IM) - flammability (ÖNORM B 3825 & A 3800-1) - light fastness - 5 (ISO 105-B02) 	



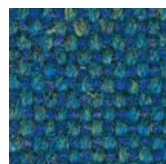
MLF24



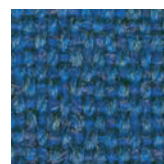
MLF37



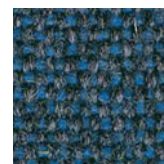
MLF38



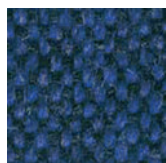
MLF34



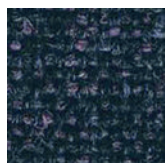
MLF05



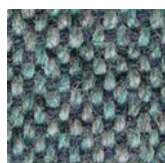
MLF35



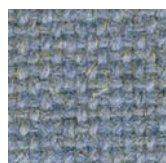
MLF19



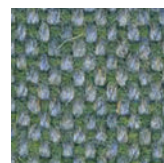
MLF36



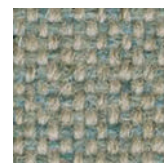
MLF22



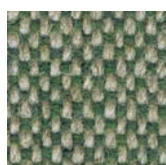
MLF21



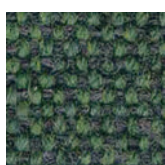
MLF25



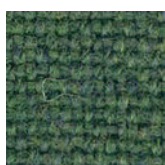
MLF10



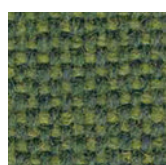
MLF09



MLF32



MLF29



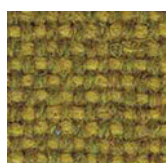
MLF18



MLF30



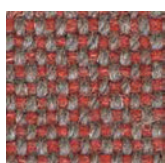
MLF17



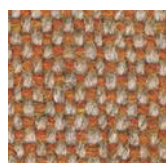
MLF31



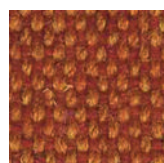
MLF07



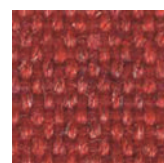
MLF03



MLF08



MLF13



MLF01

Creative Edition

profim



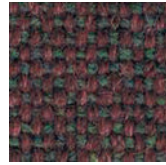
MLF06



MLF14



MLF40



MLF39



MLF11



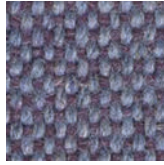
MLF04



MLF41



MLF33



MLF27



MLF20



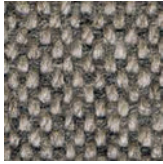
MLF12



MLF23



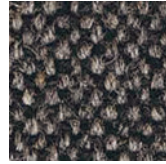
MLF15



MLF02



MLF26




MLF16



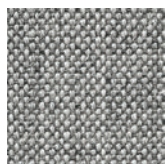
MLF28

Finishings colours in print may differ from real ones.

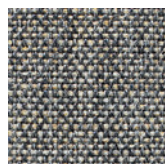
Remix 2		 CREATIVE EDITION
Manufacturer	Kvadrat	
Composition	90% wool, 10% nylon	
Weight	300 g/m ²	
Certificates	<ul style="list-style-type: none"> - abrasion resistance - 100000 Martindale cycles (EN ISO 12947-2) - pilling resistance - 3-4 (EN ISO 12945-2) - flammability - cigarette (EN 1021-1) - flammability - match (EN 1021-2) - flammability (BS 5852, part 1, ignition source 0-1) - flammability (ÖNORM B1/Q1) - light fastness - 5-7 (ISO 105-B02) 	



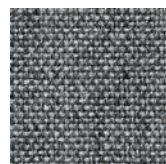
113



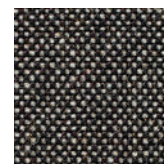
123



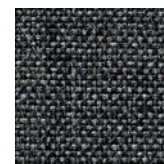
133



143



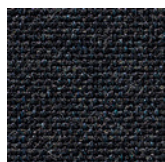
152



163



173



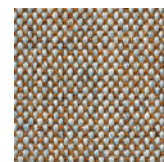
183



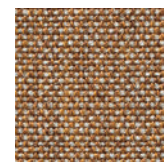
223



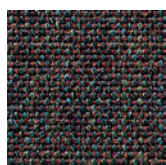
233



242



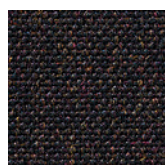
252



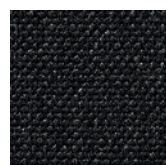
362



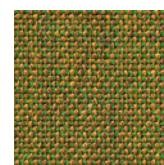
373



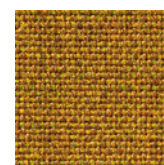
383



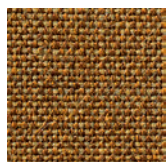
393



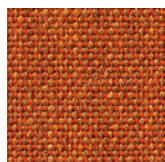
412



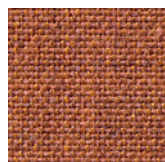
422



433



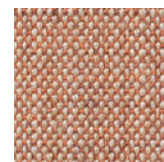
443



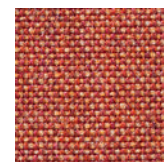
452



543



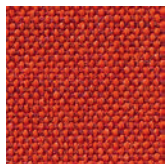
612



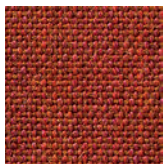
632

Creative Edition

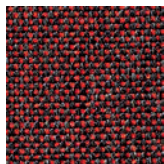
profim



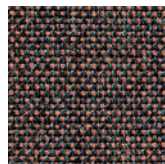
643



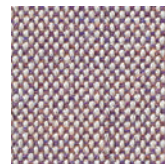
653



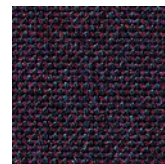
662



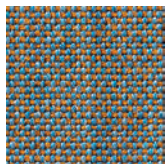
672



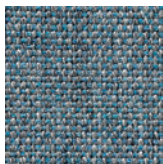
682



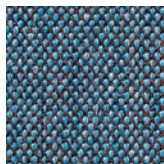
692



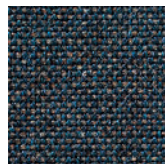
722



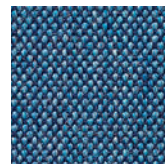
733



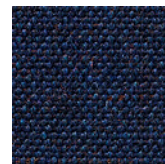
743



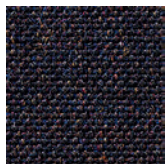
753



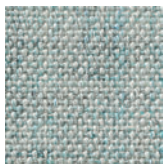
762



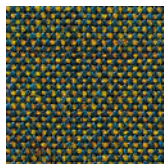
773



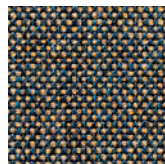
783



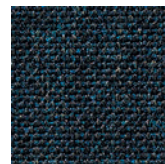
823



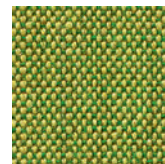
842



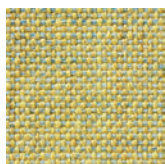
852



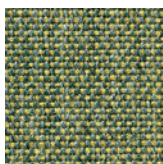
873



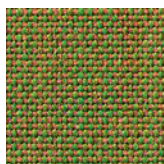
912



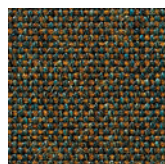
923



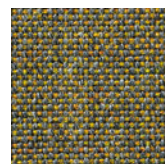
933



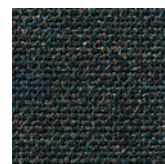
942



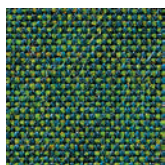
954



962




973



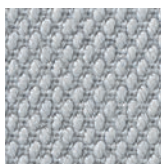
982

Finishings colours in print may differ from real ones.

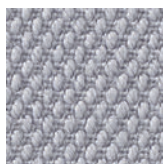
Steelcut 2		 CREATIVE EDITION
Manufacturer	Kvadrat	
Composition	90% wool, 10% nylon	
Weight	589 g/m ²	
Certificates	<ul style="list-style-type: none"> - abrasion resistance - 80000 Martindale cycles (EN ISO 12947-2) - pilling resistance - 3-4 (EN ISO 12945-2) - flammability - cigarette (BS EN 1021-1) - flammability - match (BS EN 1021-2) - flammability (BS 5852, part 1, ignition source 2) - flammability (DIN 4102:B2) - flammability (ÖNORM B1/Q1) - light fastness - 5-7 (ISO 105-B02) 	



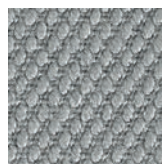
110



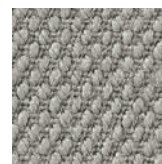
120



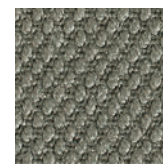
135



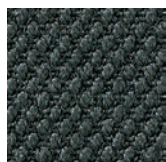
140



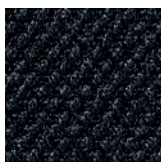
155



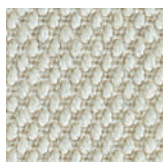
160



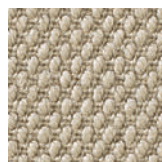
180



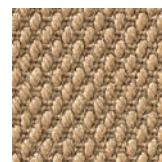
190



220



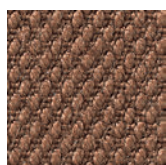
240



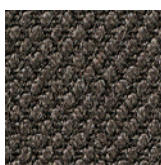
255



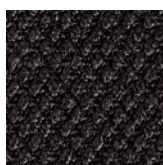
265



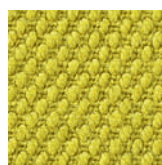
365



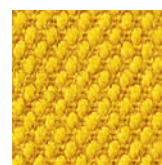
370



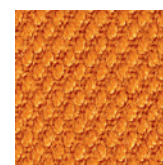
380



435



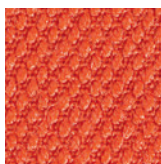
445



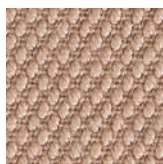
535



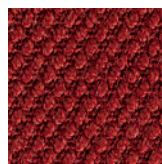
545



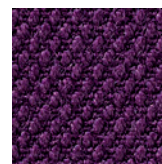
550



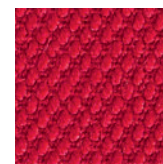
605



615



625



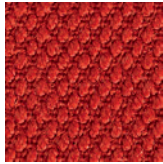
635

Creative Edition

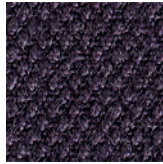
profim



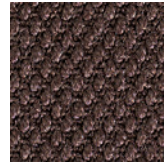
655



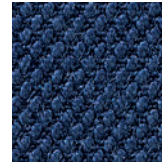
660



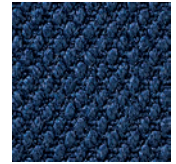
685



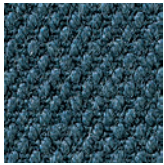
695



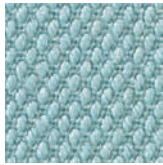
760



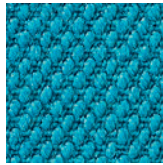
775



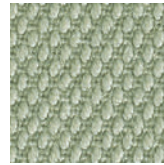
780



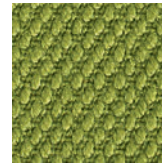
820



835



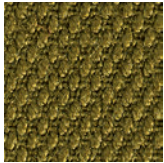
935



950



975



985

Finishings colours in print may differ from real ones.

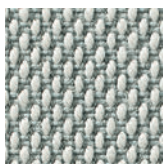
Steelcut Trio



Manufacturer	Kvadrat
Composition	90% wool, 10% nylon
Weight	550 g/m ²
Certificates	<ul style="list-style-type: none"> - abrasion resistance - 100000 Martindale cycles (EN ISO 12947-2) - pilling resistance - 3-4 (EN ISO 12945-2) - flammability - cigarette (BS EN 1021-1) - flammability - match (BS EN 1021-2) - flammability (BS 5852, part 1, ignition source 0-1) - flammability (DIN 4102:B2) - flammability (ÖNORM B1/Q1) - light fastness - 5-7 (ISO 105-B02)



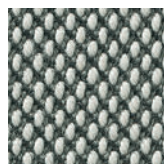
105



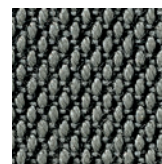
113



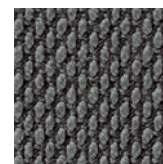
124



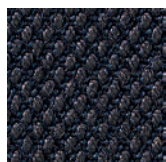
133



153



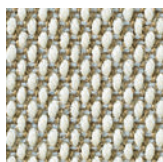
176



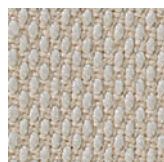
195



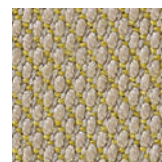
205



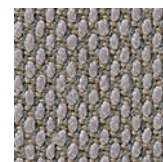
213



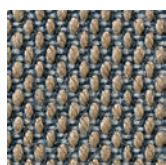
226



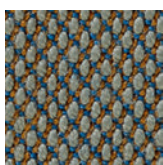
236



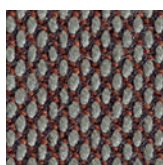
246



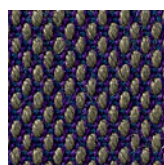
253



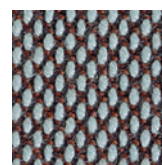
266



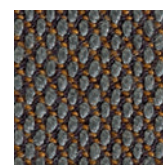
276



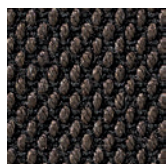
283



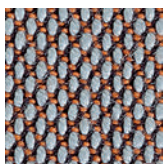
336



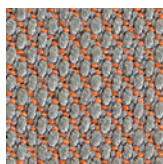
376



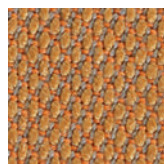
383



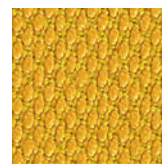
416



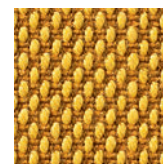
426



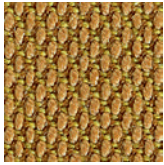
436



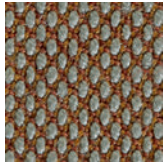
446



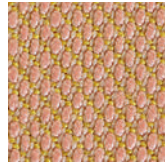
453



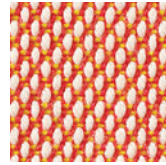
466



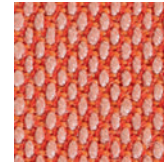
476



506



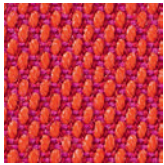
515



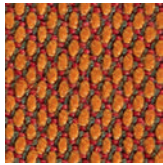
526



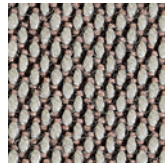
533



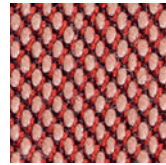
553



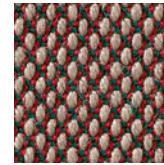
576



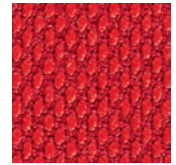
616



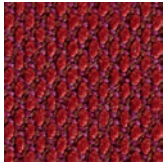
636



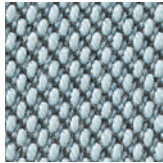
645



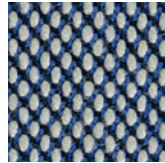
666



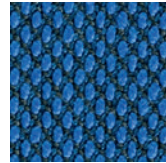
686



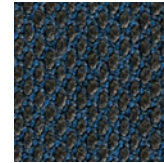
713



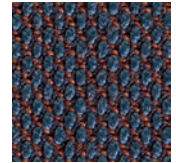
716



746



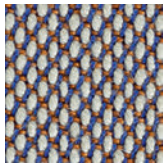
756



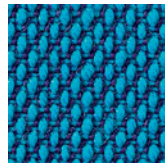
776



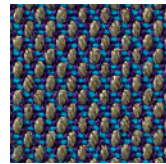
796



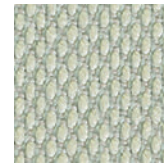
806



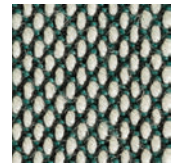
865



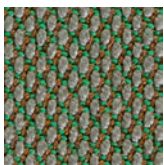
883



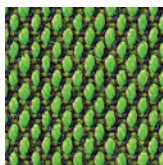
906



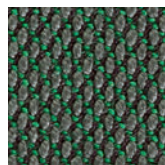
916



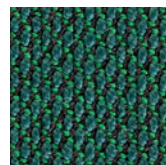
946



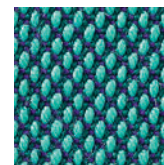
953



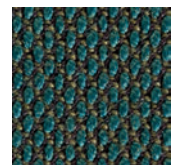
966



976



983

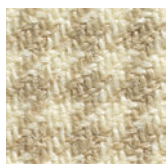


996

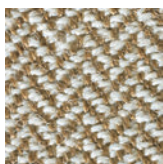
Troon (CF 752) / Turnberry (CF 751)



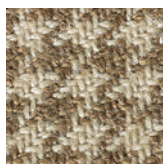
Manufacturer	Bute
Composition	92% wool, 8% nylon
Weight	357 g/m ²
Certificates	<ul style="list-style-type: none"> - Troon abrasion resistance - 60000 Martindale cycles (BS2543, BS EN 14465) - Turnberry abrasion resistance - 80000 Martindale cycles (BS2543, BS EN 14465) - pilling resistance - 3 (EN ISO 12945-2) - flammability - cigarette (BS EN 1021-1) - flammability - match (BS EN 1021-2) - flammability (BS 5852, Crib 5) - light fastness - 5 (BS ISO 105-B02)



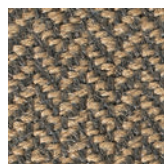
CF 752/0202



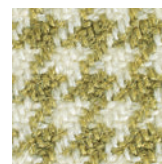
CF 751/0302



CF 752/3838



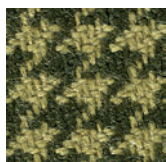
CF 751/1450



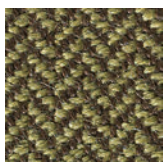
CF 752/1515



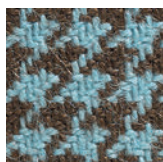
CF 751/1734



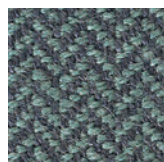
CF 752/2727



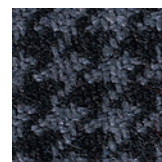
CF 751/1534



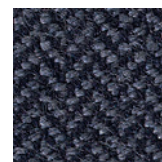
CF 752/2323



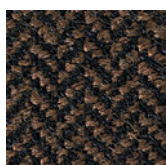
CF 751/1228



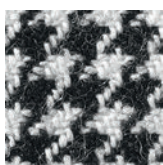
CF 752/0303



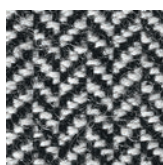
CF 751/0809



CF 751/0104



CF 752/0101



CF 751/0102

COLLECTION	Upholstery			Quilting*	
	Remix 2 (Kvadrat) Main Line Flax (Camira)	Steelcut 2 Steelcut Trio (Kvadrat)	Troon Turnberry (Bute)	Seat top site	Backrest front site
Armchairs and swivel chairs					
Action	●	●	-	●	●
Action 24/7	-	-	-	-	-
Active	●	●	-	-	-
LightUp	●	●	-	●	-
Mickey	●	●	●	-	-
Motto	●	●	-	●	●
MyTurn	●	●	-	●	●
One	-	-	-	-	-
Veris	●	●	-	●	●
Veris Net	●	●	-	●	-
Violle	●	●	-	-	-
Xenon	●	●	-	●	○
Xenon Net	●	●	-	●	-

* Quilting available in standard upholsteries (excluding Valencia) and fabrics within the Creative Edition offer.

Legend:

- available in each model of the collection
- available in some of the models of the collection
- not available

COLLECTION	Upholstery			Quilting*			
	Remix 2 (Kvadrat) Main Line Flax (Camira)	Steelcut 2 Steelcut Trio (Kvadrat)	Troon Turnberry (Bute)	Seat top site / seat pad	Backrest front site / backrest pad	Shell front site	Shell back site
Visitor chairs							
Acos	●	●	-	●	●	-	-
Ariz	●	●	-	-	-	-	-
Bit	●	●	-	●	●	-	-
Com	●	●	-	●	●	●	-
Kala	●	●	-	●	●	-	-
Komo	●	●	-	-	-	-	-
Sensi	●	●	-	●	●	●	●
Zoo	●	●	-	-	-	-	-

* Quilting available in standard upholsteries (excluding Valencia) and fabrics within the Creative Edition offer.

Legend:

- available in each model of the collection
- available in some of the models of the collection
- not available

COLLECTION	Upholstery			Quilting*		
	Remix 2 (Kvadrat) Main Line Flax (Camira)	Steelcut 2 Steelcut Trio (Kvadrat)	Troon Turnberry (Bute)	Seat cushion	Inside surface	Outside surface
Sofas, armchairs, modular systems						
Chic	●	●	●	-	-	-
Chic Air	●	●	●	-	-	-
Fan	●	●	●	-	-	-
Hover	●	●	-	●	-	-
MyTurn Sofa	●	●	-	-	-	●
Nu	●	●	-	●	-	-
Nu Spin	●	●	●	-	-	-
October	●	●	●	-	-	-
Pelikan	●	●	-	-	-	-
SoftBox**	●	●	-	-	-	-
Sorriso	●	●	-	●	-	-
UpDown	●	●	-	-	-	-
Vancouver Lite	●	●	-	-	○	●
Vancouver Oto	●	●	-	-	-	●
Wall In	○	○	-	-	○	-
Wyspa	●	●	-	-	-	-

* Quilting available in standard upholsteries (excluding Valencia) and fabrics within the Creative Edition offer.

** To get the whole extra charge the price of screen must be added to the price of seating.

Legend:

- available in each model of the collection
- available in some of the models of the collection
- not available

Creative Edition

profim

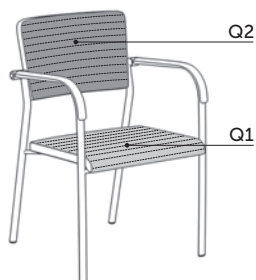
Quilting scheme in models:
Action, LightUp, Motto, MyTurn,
Veris, Veris Net, Xenon, Xenon Net

Additional information:
Q1 - quilting on the front side of the seat, without sides,
without headrest
Q2 - quilting on the front of the backrest, without sides



Quilting scheme in models:
Acos, Kala

Additional information:
Q1 - quilting on the front side of the seat, without sides
Q2 - quilting on the front of the backrest, without sides



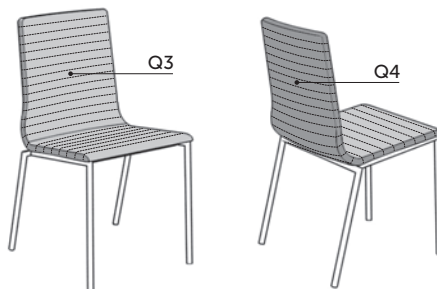
Quilting scheme in models:
Bit, Com, Sensi

Additional information:
Q1 - quilting on the seat pad
Q2 - quilting on the backrest pad



Quilting scheme in models:
Com, Sensi

Additional information:
Q3 - quilting on the whole front part
Q4 - quilting on the whole rear part



Creative Edition

profim

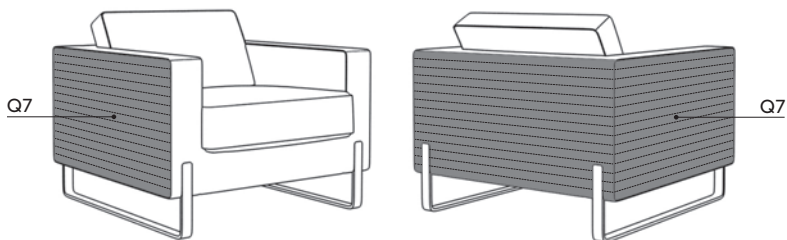
Quilting scheme in models:
Hover, Nu, Sorriso

Additional information:
Q5 - quilting on the seat cushion



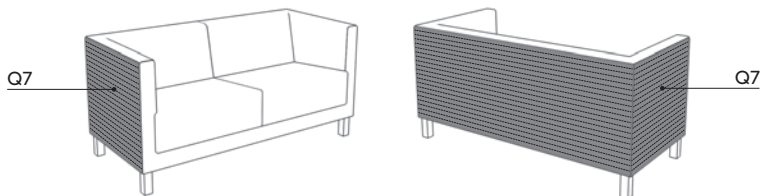
Quilting scheme in models:
MyTurn Sofa

Additional information:
Q7 - quilting on the outer part of the sides and the back



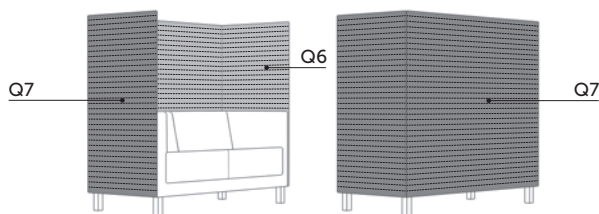
Quilting scheme in models:
Vancouver Lite

Additional information:
Q7 - quilting on the outer part of the sides and the back



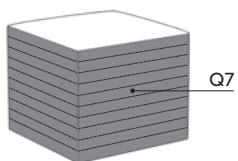
Quilting scheme in models:
Vancouver Lite

Additional information:
Q6 - quilting on the inner part of the wall
Q7 - quilting on the outer part of the wall



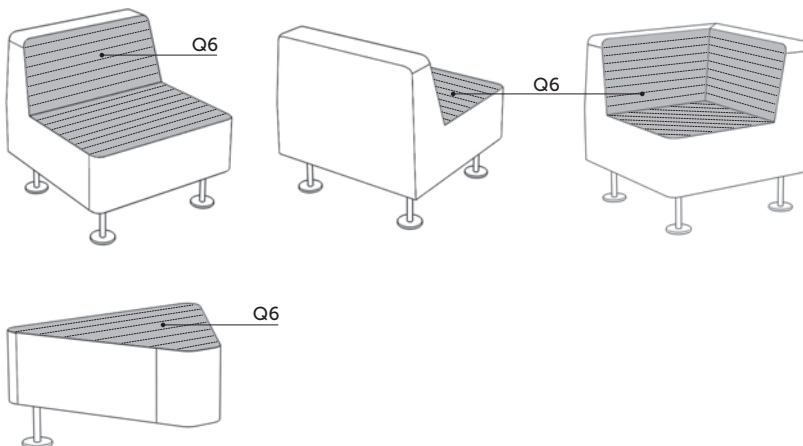
Quilting scheme in models:
Vancouver Oto

Additional information:
Q7 - quilting on all of the sides



Quilting scheme in models:
Wall In

Additional information:
Q6 - quilting on the seat and backrest



profim