

Aero Flip Instructions

Step 1

Note: Before making a cut-out, please contact your supplier to provide you with technical drawings with suitable table cut-out dimensions. Ensure that there is sufficient clearance, 150mm below surface and 30mm between the cut-out edge and the edge of the work surface.

Step 2

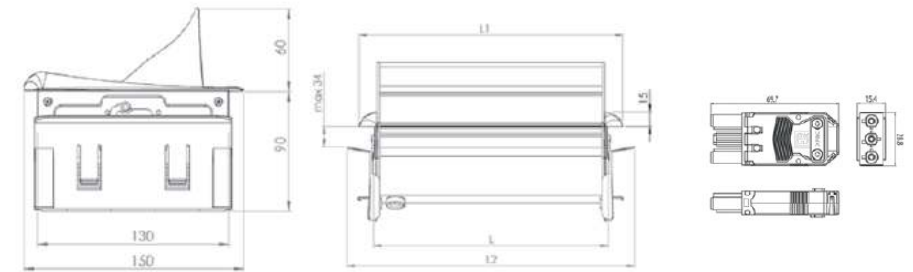
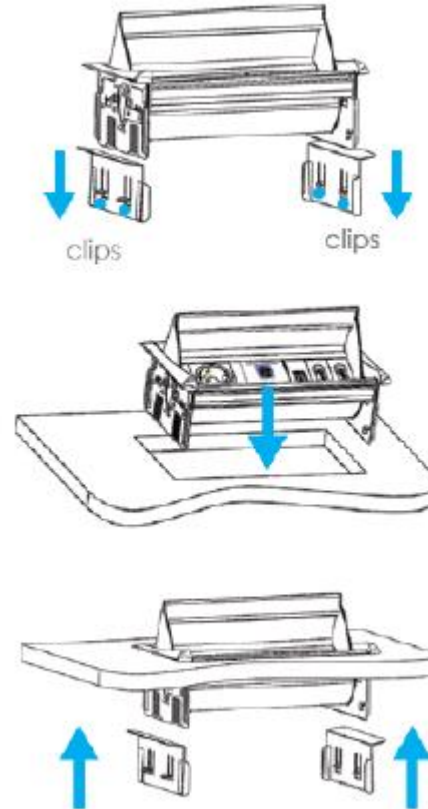
Lift the clips and slide the side fixators down.

Step 3

Place the module in the table cut out.

Step 4

Pull the sliding clips back up until the module is fixed to the table.



To change the fuse, please TURN ELECTRICITY OFF and wait for 10 minutes before operating. Use a flat screwdriver (5mm width) to pull out carrier with fuse and replace with spare one.

What equipment can I plug into the socket?

Anything with a voltage below 250V and a current rated below 5A i.e. Computers, Phones and Laptops.

What equipment can't I plug into the socket?

Please do not plug the following items into ABL Power Modules: Hoovers, Fan Heaters, Kettles, Hair straighteners and Toasters to name a few. For further information or to see the full British Standards, please call our friendly sales team on the number below.