

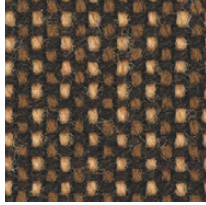
# C | Basic fabric

PRICE GROUP | PREISGRUPPE | GROUPE DE PRIX

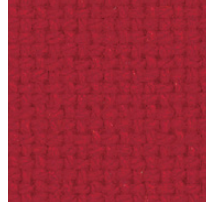
0\*



C4



C24



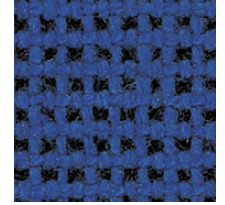
C2



C29



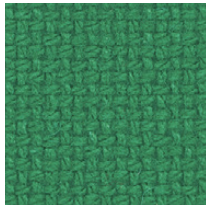
C6



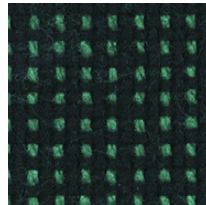
C14



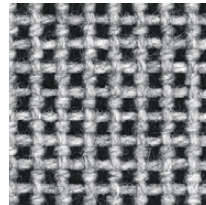
C47



C34



C32



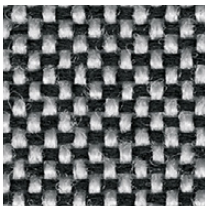
C7



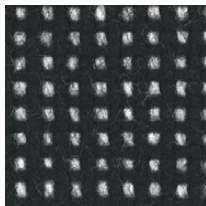
C12



C38



C73



C26



C11

\* Price group 0 – only applicable to products made by the Nowy Styl brand.  
 | Preisgruppe 0 – nur für Produkte der Marke Nowy Styl erhältlich.  
 | Groupe de prix 0 – applicable uniquement sur les produits de la marque Nowy Styl.

**Composition:**

100% synthetic fibre

**Weight:**

225 g/m<sup>2</sup>

**Abrasion resistance:**

≥35 000 Martindale cycles

**Material:**

100% Kunstfaser

**Gewicht:**

225 g/m<sup>2</sup>

**Scheuerfestigkeit:**

≥35 000 Touren Martindale

**Composition :**

100% fibre synthétique

**Poids :**

225 g/m<sup>2</sup>

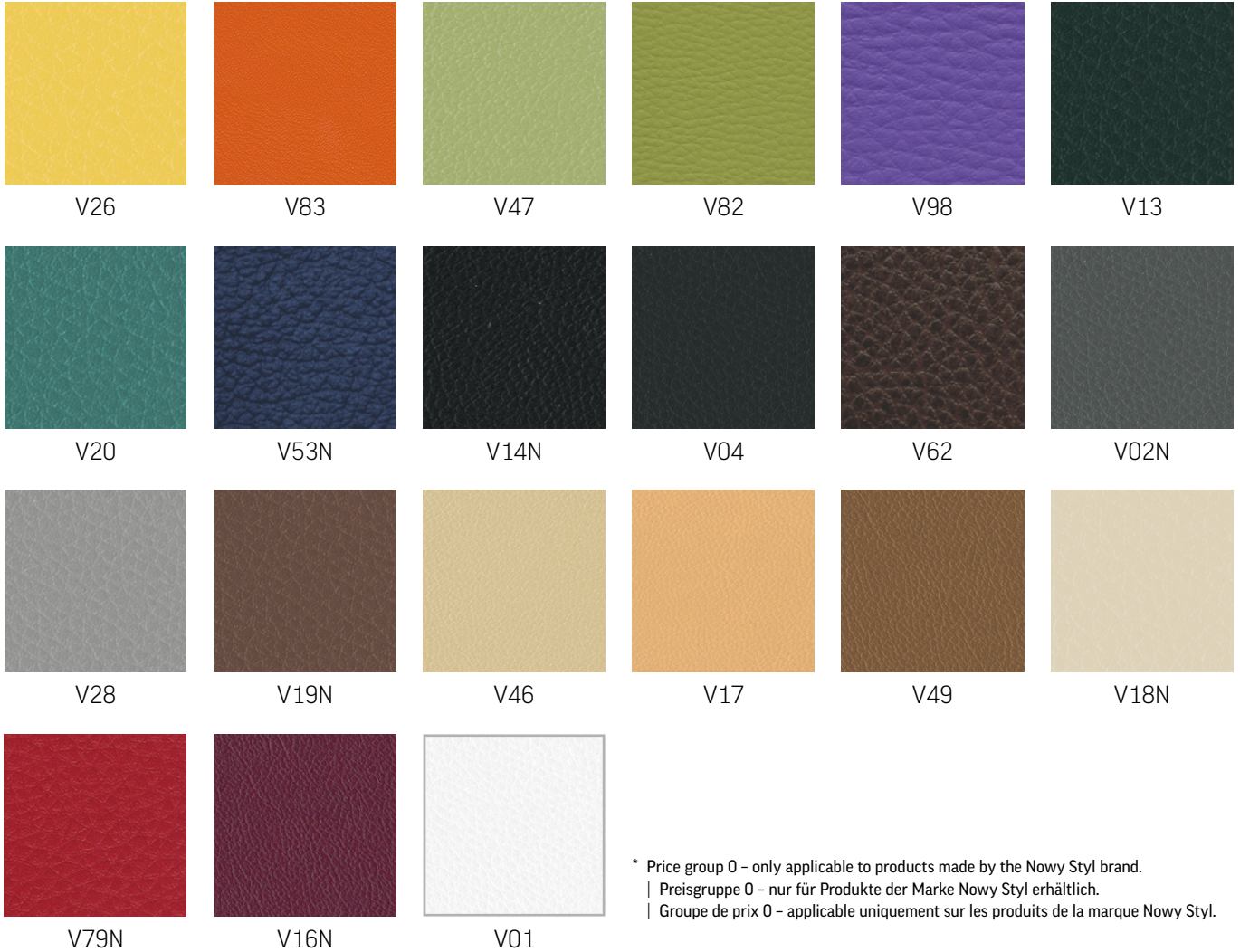
**Résistance à l'abrasion :**

≥35 000 Cycles Martindales

# V | Imitation leather

PRICE GROUP | PREISGRUPPE | GROUPE DE PRIX

0\*



\* Price group 0 - only applicable to products made by the Nowy Styl brand.  
 | Preisgruppe 0 - nur für Produkte der Marke Nowy Styl erhältlich.  
 | Groupe de prix 0 - applicable uniquement sur les produits de la marque Nowy Styl.

**Composition:**

100% PVC coated polyester

**Weight:**460 g/m<sup>2</sup>**Abrasion resistance:**

≥30 000 Martindale cycles

**Flammability:**applies to colours marked with the N symbol:  
EN 1021-1, EN 1021-2, BS 5852-1**Other:**

easy to keep clean

**Material:**

100% PVC-beschichtetes Polyestergewebe

**Gewicht:**460 g/m<sup>2</sup>**Scheuerfestigkeit:**

≥30 000 Touren Martindale

**Brandschutznormen:**betrifft die Farben mit "N" Kennzeichnung:  
EN 1021-1, EN 1021-2, BS 5852-1**Sonstiges:**

einfach zu reinigen

**Composition :**

100% polyester enduit PVC

**Poids :**460 g/m<sup>2</sup>**Résistance à l'abrasion :**

≥30 000 Cycles Martindales

**Résistance au feu :**Coloris marqués N sont non-inflammables :  
EN 1021-1, EN 1021-2, BS 5852-1**Autres :**

facile à nettoyer

## M | Micro

PRICE GROUP | PREISGRUPPE | GROUPE DE PRIX

0\*



M15



M04



M56



M38



M81



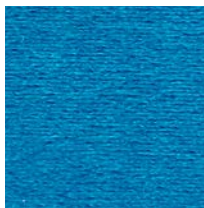
M54



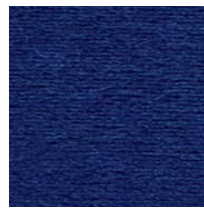
M07



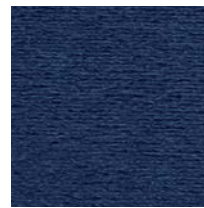
M25



M31



M28



M62



M47



M43

\* Price group 0 – only applicable to products made by the Nowy Styl brand.  
 | Preisgruppe 0 – nur für Produkte der Marke Nowy Styl erhältlich.  
 | Groupe de prix 0 – applicable uniquement sur les produits de la marque Nowy Styl.

**Composition:**

100% polyester

**Weight:**160 g/m<sup>2</sup>**Abrasion resistance:**

50 000 Martindale cycles

**Flammability:**

EN 1021-1, EN 1021-2

**Other:**

EN 71-1 safety of toys (mechanical and physical properties)  
 EN 71-2 safety of toys (flammability)  
 EN 71-3 safety of toys (migration of certain elements)

**Material:**

100% Polyester

**Gewicht:**160 g/m<sup>2</sup>**Scheuerfestigkeit:**

50 000 Touren Martindale

**Brandschutznormen:**

EN 1021-1, EN 1021-2

**Sonstiges:**

EN 71-1 Sicherheit von Spielzeug (mechanische und physikalische Eigenschaften)  
 EN 71-2 Sicherheit von Spielzeug (entflammbarkeit)  
 EN 71-3 Sicherheit von Spielzeug (migration bestimmter Elemente)

**Composition :**

100% polyester

**Poids :**160 g/m<sup>2</sup>**Résistance à l'abrasion :**

50 000 Cycles Martindales

**Résistance au feu :**

EN 1021-1, EN 1021-2

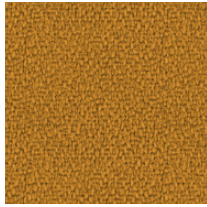
**Autres:**

EN 71-1 sécurité des jouets (propriétés mécaniques et physiques)  
 EN 71-2 sécurité des jouets (inflammabilité)  
 EN 71-3 sécurité des jouets (migration de certains éléments)

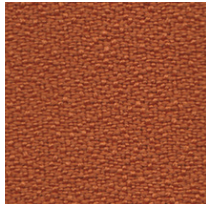
# BN | Bondai

PRICE GROUP | PREISGRUPPE | GROUPE DE PRIX

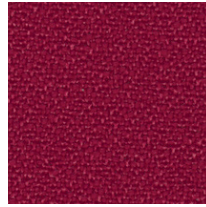
1



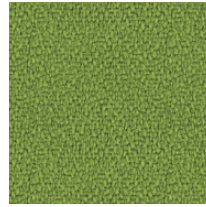
BN3005



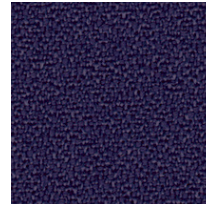
BN3012



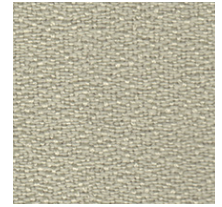
BN4011



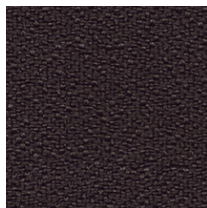
BN7048



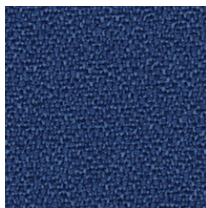
BN5004



BN1005



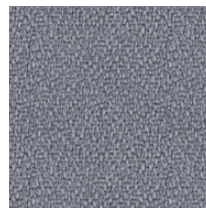
BN2036



BN6016



BN1008



BN8078



BN8010



BN8033

**Composition:**

100% polyester

**Weight:**

250 g/m<sup>2</sup>

**Abrasion resistance:**

150 000 Martindale cycles

**Flammability:**

EN 1021-1, EN 1021-2, BS 7176 medium hazard,  
BS 5852 Crib 5

**Material:**

100% Polyester

**Gewicht:**

250 g/m<sup>2</sup>

**Scheuerfestigkeit:**

150 000 Touren Martindale

**Brandschutznormen:**

EN 1021-1, EN 1021-2, BS 7176 medium hazard,  
BS 5852 Crib 5

**Composition :**

100% polyester

**Poids :**

250 g/m<sup>2</sup>

**Résistance à l'abrasion :**

150 000 Cycles Martindales

**Résistance au feu :**

EN 1021-1, EN 1021-2, BS 7176 medium hazard,  
BS 5852 Crib 5

## EF | Oban

PRICE GROUP | PREISGRUPPE | GROUPE DE PRIX

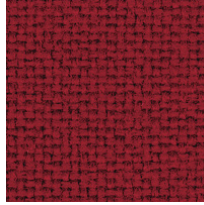
1



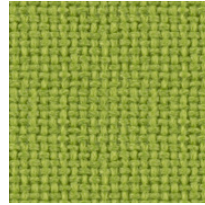
EF808



EF076



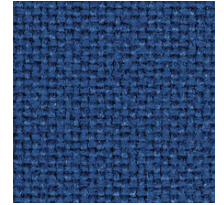
EF037



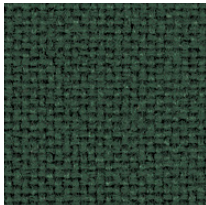
EF046



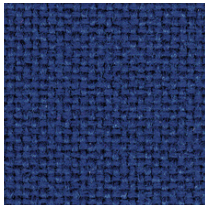
EF810



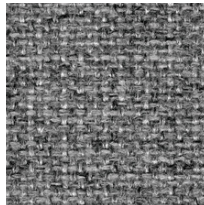
EF078



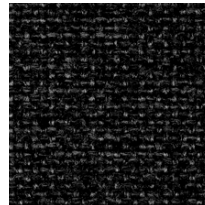
EF069



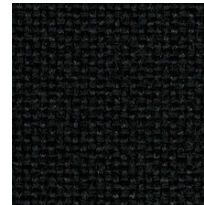
EF010



EF031



EF002



EF019

\* Oban - only applicable to products made by the Nowy Styl brand.  
 | Oban - nur für Produkte der Marke Nowy Styl erhältlich.  
 | Oban - applicable uniquement sur les produits de la marque Nowy Styl.

**Composition:**  
100% polypropylene  
**Weight:**  
230 g/m<sup>2</sup>  
**Abrasion resistance:**  
EN 14465 grade A  
**Flammability:**  
EN 1021-1

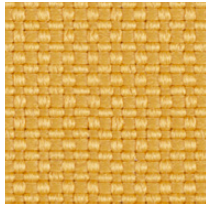
**Material:**  
100% Polypropylen  
**Gewicht:**  
230 g/m<sup>2</sup>  
**Scheuerfestigkeit:**  
EN 14465 grade A  
**Brandschutznormen:**  
EN 1021-1

**Composition :**  
100% polypropylène  
**Poids :**  
230 g/m<sup>2</sup>  
**Résistance à l'abrasion :**  
EN 14465 grade A  
**Résistance au feu :**  
EN 1021-1

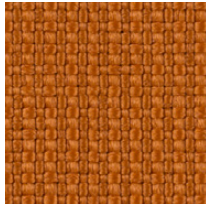
# SM | Sempre

PRICE GROUP | PREISGRUPPE | GROUPE DE PRIX

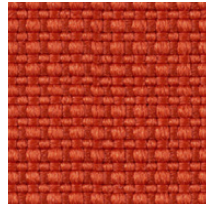
1



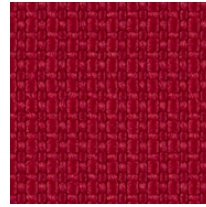
SM11



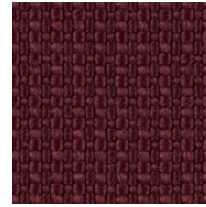
SM10



SM09



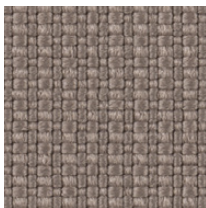
SM12



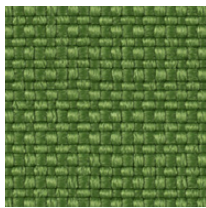
SM06



SM05



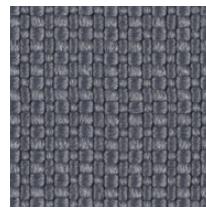
SM04



SM08



SM07



SM03



SM02



SM01

**Composition:**

100% polyester

**Weight:**366 g/m<sup>2</sup>**Abrasion resistance:**

160 000 Martindale cycles

**Flammability:**

EN 1021-1, EN 1021-2

**Material:**

100% Polyester

**Gewicht:**366 g/m<sup>2</sup>**Scheuerfestigkeit:**

160 000 Touren Martindale

**Brandschutznormen:**

EN 1021-1, EN 1021-2

**Composition :**

100% polyester

**Poids :**366 g/m<sup>2</sup>**Résistance à l'abrasion :**

160 000 Cycles Martindales

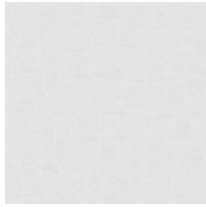
**Résistance au feu :**

EN 1021-1, EN 1021-2

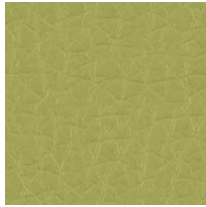
# KN | Kaiman

PRICE GROUP | PREISGRUPPE | GROUPE DE PRIX

1



KN03



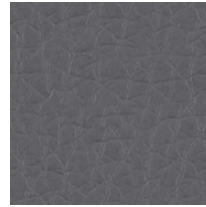
KN429



KN143



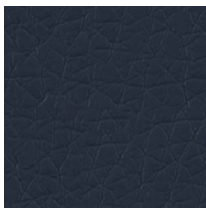
KN75/01



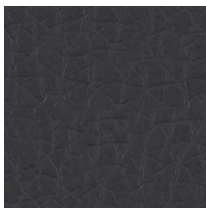
KN484



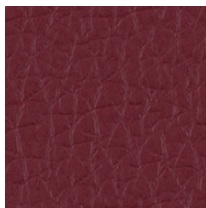
KN32



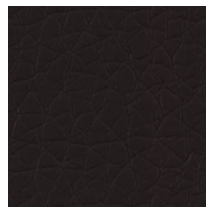
KN49



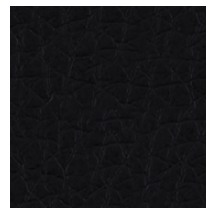
KN755



KN615



KN250



KN780

**Composition:**

upper layer: 100% polyurethane  
bottom layer: 65% polyester, 35% cotton

**Weight:**

435 g/m<sup>2</sup>

**Abrasion resistance:**

100 000 Martindale cycles

**Flammability:**

BS 5852 Source 0

**Other:**

Hydrolyse (DIN EN ISO 32100 (DIN 53351) / DIN 53359) - 15 000 cycles

**Material:**

Deckmaterial: 100% Polyurethane  
Trägermaterial: 65% Polyester, 35% Baumwolle

**Gewicht:**

435 g/m<sup>2</sup>

**Scheuerfestigkeit:**

100 000 Touren Martindale

**Brandschutznormen:**

BS 5852 Source 0

**Sonstiges:**

Hydrolyse (DIN EN ISO 32100 (DIN 53351) / DIN 53359) - 15 000 Touren

**Composition :**

Couche supérieure: 100% polyuréthane  
Couche inférieure: 65% polyester, 35% coton

**Poids :**

435 g/m<sup>2</sup>

**Résistance à l'abrasion :**

100 000 Cycles Martindales

**Résistance au feu :**

BS 5852 Source 0

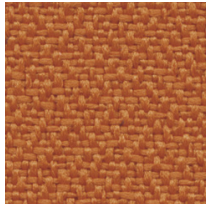
**Autres :**

Hydrolysis (DIN EN ISO 32100 (DIN 53351) / DIN 53359) - 15 000 cycles

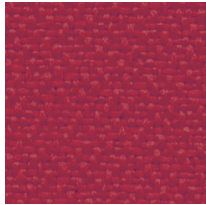
# YB | Lucia

PRICE GROUP | PREISGRUPPE | GROUPE DE PRIX

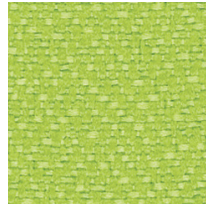
1



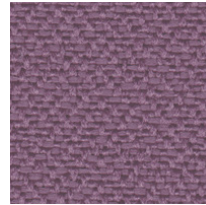
YB130



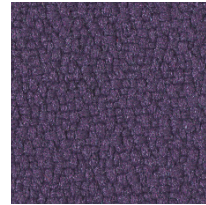
YB105



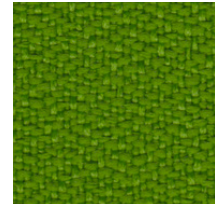
YB156



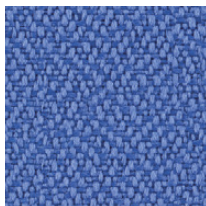
YB102



YB090



YB200



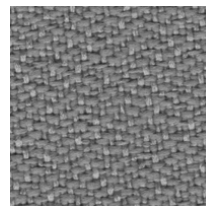
YB097



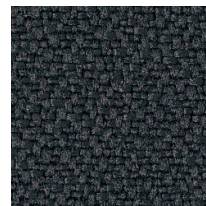
YB026



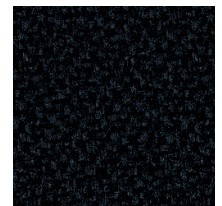
YB093



YB094



YB046



YB009

**Composition:**

100% recycled polyester. Non metallic dyestuffs

**Weight:**260 g/m<sup>2</sup>**Abrasion resistance:**

50 000 Martindale cycles

**Flammability:**EN 1021-1, EN 1021-2, BS 7176 low hazard,  
BS 476 Class 1**Other:**

Environmental: EU Ecolabel certified, recyclable

**Material:**100% recyceltes Polyester. Nicht schwermetallhaltige  
Farbstoffe**Gewicht:**260 g/m<sup>2</sup>**Scheuerfestigkeit:**

50 000 Touren Martindale

**Brandschutznormen:**EN 1021-1, EN 1021-2, BS 7176 low hazard,  
BS 476 Class 1**Sonstiges:**Umweltfreundlich: EU Ecolabel zertifiziert,  
recyclingfähig**Composition :**

100% polyester recyclé. Teintures non métalliques

**Poids :**260 g/m<sup>2</sup>**Résistance à l'abrasion :**

50 000 Cycles Martindales

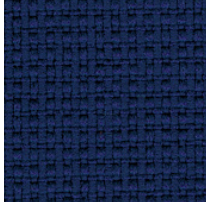
**Résistance au feu :**EN 1021-1, EN 1021-2, BS 7176 low hazard,  
BS 476 Class 1**Autres :**Favorable à l'environnement : certifié EU Ecolabel,  
recyclable



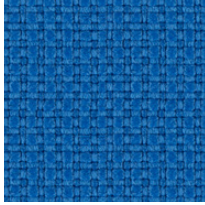
# YN | Contract

PRICE GROUP | PREISGRUPPE | GROUPE DE PRIX

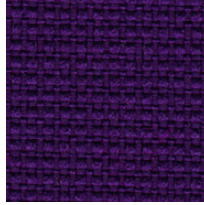
2



YN210



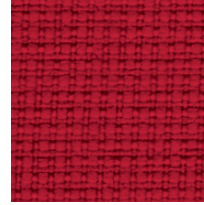
YN202



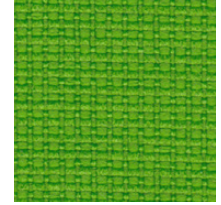
YN204



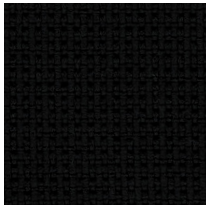
YN206



YN079



YN200



YN009

**Composition:**

100% recycled polyester. Non metallic dyestuffs

**Weight:**320 g/m<sup>2</sup>**Abrasion resistance:**

100 000 Martindale cycles

**Flammability:**

EN 1021-1, EN 1021-2, BS 7176 low hazard, BS 7176 medium hazard, BS 5852 Crib 5, NF P 503 M1, DIN 4102 B1, UNI 9174 Classe 1

**Other:**

Environmental: EU Ecolabel certified, recyclable

**Material:**

100% recyceltes Polyester. Nicht schwermetallhaltige Farbstoffe

**Gewicht:**320 g/m<sup>2</sup>**Scheuerfestigkeit:**

100 000 Touren Martindale

**Brandschutznormen:**

EN 1021-1, EN 1021-2, BS 7176 low hazard, BS 7176 medium hazard, BS 5852 Crib 5, NF P 503 M1, DIN 4102 B1, UNI 9174 Classe 1

**Sonstiges:**

Umweltfreundlich: EU Ecolabel zertifiziert, recyclingfähig

**Composition :**

100% polyester recyclé. Teintures non métalliques

**Poids :**320 g/m<sup>2</sup>**Résistance à l'abrasion :**

100 000 Cycles Martindales

**Résistance au feu :**

EN 1021-1, EN 1021-2, BS 7176 low hazard, BS 7176 medium hazard, BS 5852 Crib 5, NF P 503 M1, DIN 4102 B1, UNI 9174 Classe 1

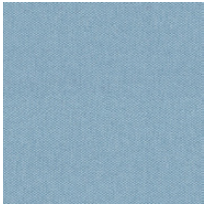
**Autres :**

Favorable à l'environnement : certifié EU Ecolabel, recyclable

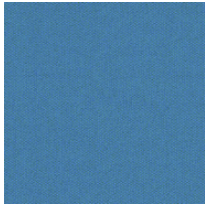
# CSE | Era

PRICE GROUP | PREISGRUPPE | GROUPE DE PRIX

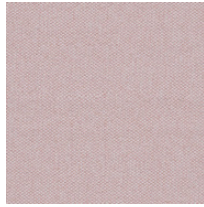
2



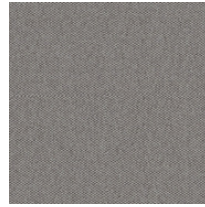
CSE20



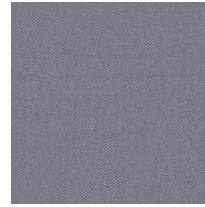
CSE10



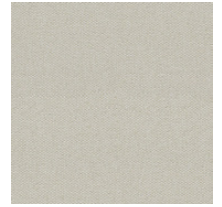
CSE19



CSE02



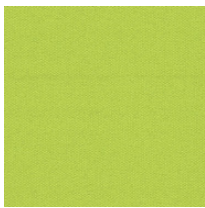
CSE11



CSE01



CSE03



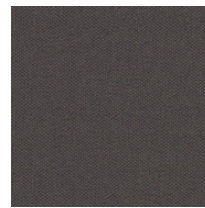
CSE07



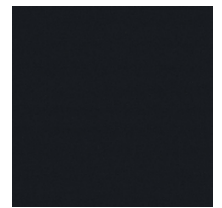
CSE16



CSE13



CSE21



CSE14

**Composition:**

100% polyester. Non metallic dyestuffs

**Weight:**

320 g/m<sup>2</sup>

**Abrasion resistance:**

≥100 000 Martindale cycles

**Flammability:**

EN 1021-1, EN 1021-2, BS 7176 low hazard

**Material:**

100% Polyester. Nicht schwermetallhaltige Farbstoffe

**Gewicht:**

320 g/m<sup>2</sup>

**Scheuerfestigkeit:**

≥100 000 Touren Martindale

**Brandschutznormen:**

EN 1021-1, EN 1021-2, BS 7176 low hazard

**Composition :**

100% polyester. Teintures non métalliques

**Poids :**

320 g/m<sup>2</sup>

**Résistance à l'abrasion :**

≥100 000 Cycles Martindales

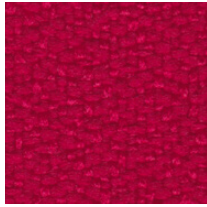
**Résistance au feu :**

EN 1021-1, EN 1021-2, BS 7176 low hazard

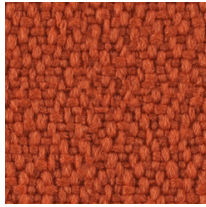
# XR | Xtreme

PRICE GROUP | PREISGRUPPE | GROUPE DE PRIX

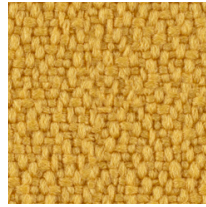
2



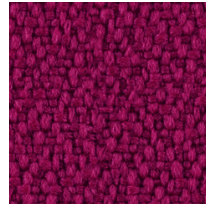
XR079



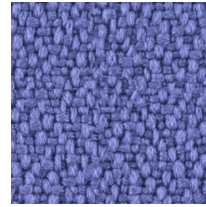
XR076



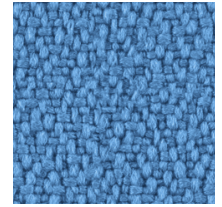
XR072



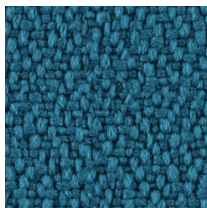
XR101



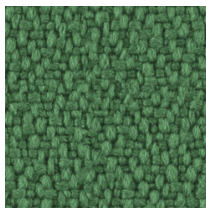
XR069



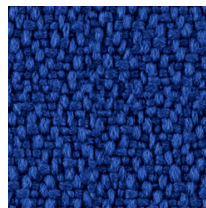
XR073



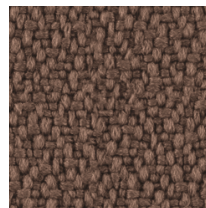
XR160



XR159



XR005



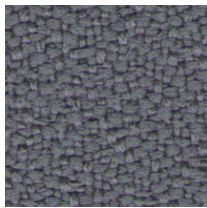
XR091



XR108



XR026



XR081



XR009

**Composition:**

100% recycled polyester. Non metallic dyestuffs

**Weight:**310 g/m<sup>2</sup>**Abrasion resistance:**

100 000 Martindale cycles

**Flammability:**EN 1021-1, EN 1021-2, BS 7176 low hazard,  
BS 7176 medium hazard, BS 5852 Crib 5,  
DIN 4102 B1, UNI 9174 Classe 1**Other:**

Environmental: EU Ecolabel certified, recyclable

**Material:**100% recyceltes Polyester. Nicht schwermetallhaltige  
Farbstoffe**Gewicht:**310 g/m<sup>2</sup>**Scheuerfestigkeit:**

100 000 Touren Martindale

**Brandschutznormen:**EN 1021-1, EN 1021-2, BS 7176 low hazard,  
BS 7176 medium hazard, BS 5852 Crib 5,  
DIN 4102 B1, UNI 9174 Classe 1**Sonstige:**Umweltfreundlich: EU Ecolabel zertifiziert,  
recyclingfähig**Composition :**

100% polyester recyclé. Teintures non métalliques

**Poids :**310 g/m<sup>2</sup>**Résistance à l'abrasion :**

100 000 Cycles Martindales

**Résistance au feu :**EN 1021-1, EN 1021-2, BS 7176 low hazard,  
BS 7176 medium hazard, BS 5852 Crib 5,  
DIN 4102 B1, UNI 9174 Classe 1**Autres :**Favorable à l'environnement : certifié EU Ecolabel,  
recyclable

# CM | Microfibra

PRICE GROUP | PREISGRUPPE | GROUPE DE PRIX

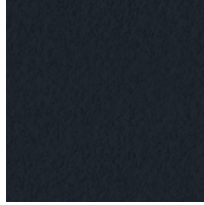
2



CM59



CM43



CM35

**Composition:**

83% polyester, 17% cotton

**Weight:**

355 g/m<sup>2</sup>

**Abrasion resistance:**

100 000 Martindale cycles

**Flammability:**

EN 1021-1, EN 1021-2

**Other:**

Zero Spot - protective layer against dirt, stains & water

**Material:**

83% Polyester, 17% Baumwolle

**Gewicht:**

355 g/m<sup>2</sup>

**Scheuerfestigkeit:**

100 000 Touren Martindale

**Brandschutznormen:**

EN 1021-1, EN 1021-2

**Sonstiges:**

Zero Spot - Fleckschutzsystem gegen Verschmutzungen

**Composition :**

83% polyester, 17% coton

**Poids :**

355 g/m<sup>2</sup>

**Résistance à l'abrasion :**

100 000 Cycles Martindales

**Résistance au feu :**

EN 1021-1, EN 1021-2

**Autres :**

Zero Spot - film de protection contre l'eau et la saleté

# VL | Valencia

PRICE GROUP | PREISGRUPPE | GROUPE DE PRIX

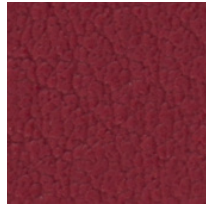
2



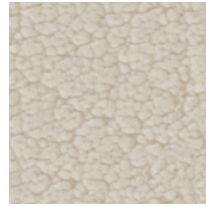
VL6012



VL6019



VL2074



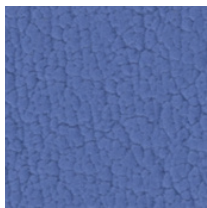
VL1048



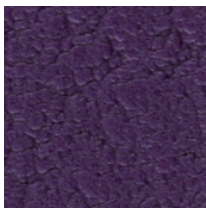
VL0034



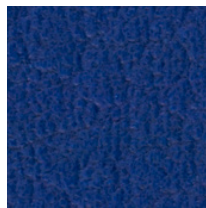
VL0020



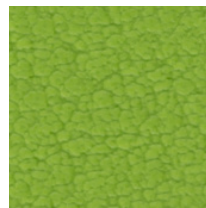
VL3001



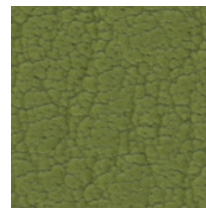
VL7001



VL3067



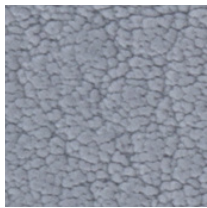
VL5041



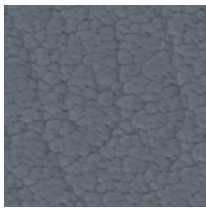
VL5001



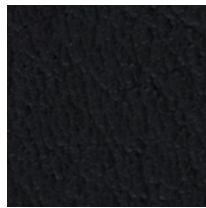
VL4041



VL4045



VL4043



VL9035

**Composition:**

upper layer: 100% vinyl  
bottom layer: 100% Hi-Loft polyester

**Weight:**

650 g/m<sup>2</sup>

**Abrasion resistance:**

300 000 Martindale cycles

**Flammability:**

EN 1021-1, EN 1021-2, DIN 4102 B2, NF P 92-503  
M2, Önorm B 3825, Önorm A 3800-1 Q1

**Other:**

EN 71-3 Safety of toys (migration of certain elements)  
PERMABLOK3® – superior antibacterial, antistain and  
antifungal protection

**Material:**

Deckmaterial: 100% Vinyl  
Trägergewebe: 100% Hi-Loft polyester

**Gewicht:**

650 g/m<sup>2</sup>

**Scheuerfestigkeit:**

300 000 Touren Martindale

**Brandschutznormen:**

EN 1021-1, EN 1021-2, DIN 4102 B2, NF P 92-503  
M2, Önorm B 3825, Önorm A 3800-1 Q1

**Sonstiges:**

EN 71-3 Sicherheit von Spielzeugen (Ausdünstung)  
PERMABLOK3® – antimikrobiell ausgerüstet,  
chemikalienbeständig und schmutzabweisend

**Composition :**

Couche supérieure : 100% vinyle  
Couche inférieure : 100% polyester Hi-Loft

**Poids :**

650 g/m<sup>2</sup>

**Résistance à l'abrasion :**

300 000 Cycles Martindales

**Résistance au feu :**

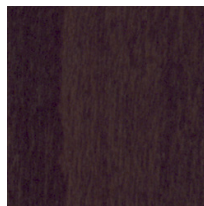
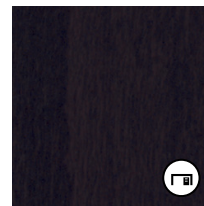
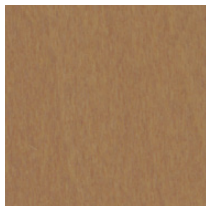
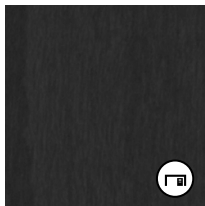
EN 1021-1, EN 1021-2, DIN 4102 B2, NF P 92-503  
M2, Önorm B 3825, Önorm A 3800-1 Q1

**Autres :**

EN 71-3 Sécurité des jouets (migration spécifique  
de certains éléments)  
PERMABLOK3® – traitement de protection,  
antibactérien, antitaches et antifongique

## Wood &amp; Plywood

## | Beiztöne Schichtholz | Bois &amp; hêtre multiplis

1.007 / ON 1.007  
Beech1.040  
Alder1.010 / ON 1.010  
Orange1.008 / ON 1.008  
Cognac1.016 / ON 1.016  
Mahogany1.042  
Cherry1.023  
Palisander1.031 / ON 1.031  
Walnut1.033 / ON 1.033  
Wenge1.043  
Black1.032  
Colombo1.076  
Havana1.025  
Calvados1.06R  
Beech Grey1.06S  
Slate

"ON" symbols refer to veneered table tops.

| Mit „ON“ gekennzeichnete Oberflächen beziehen sich auf Furnieroberflächen.

| Les symboles «ON» se réfèrent aux coloris des plateaux en placage bois.



Veneer furniture colour matching  
wood/plywood furniture colour:

CB Veneer = 1.032 (Colombo)  
LV Veneer = 1.076 (Havana)  
BG Veneer = 1.06R (Beech Grey)



Die abgebildeten Beiztöne sind identisch mit folgenden  
Furnieroberflächen für Möbel:

CB Furnier = 1.032 (Colombo)  
LV Furnier = 1.076 (Havana)  
BG Furnier = 1.06R (Beech Grey)



Couleurs de meubles en placage bois assorties aux  
couleurs de meubles en bois / multiplis:

CB Placage bois = 1.032 (Colombo)  
LV Placage bois = 1.076 (Havana)  
BG Placage bois = 1.06R (Beech Grey)

Wood stain with slightly visible wood grain

| Beiztöne Schichtholz mit leicht sichtbarer Holzmaserung

| Teinte semi couvrante laissant transparâître les veinures du bois



2.09S  
White



2.09R  
Saffron



2.09T  
Orange



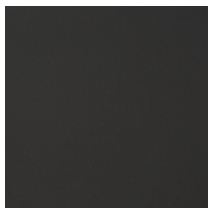
2.09Y  
Pink



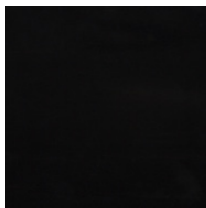
2.09U  
Mint



2.09W  
Light Blue



2.06Y  
Dark Graphite



2.07Y  
Black